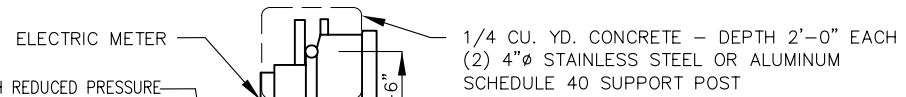


THE LIFT STATION WET WELL SHALL CONFORM TO THE FOLLOWING SIZE:

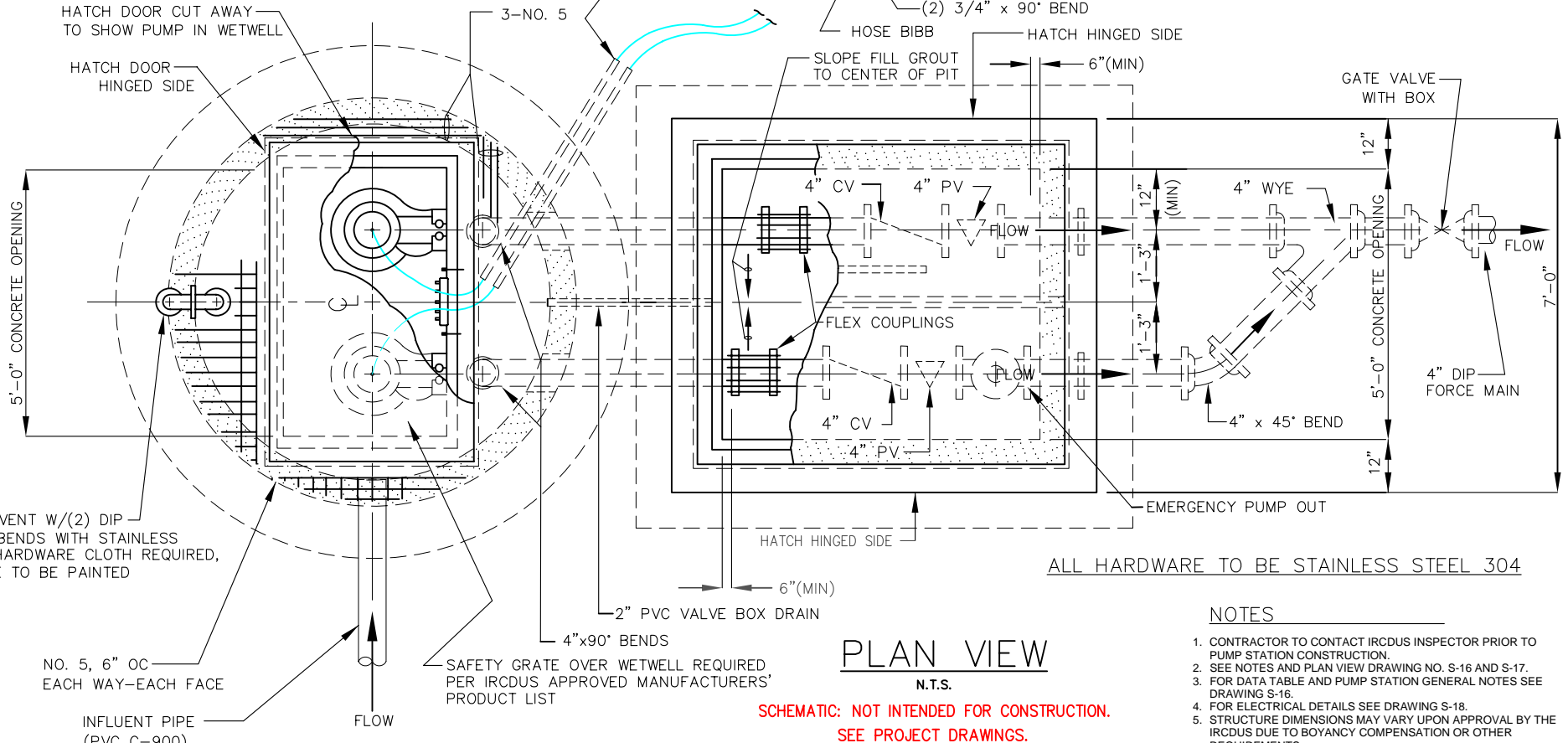
WETWELL DIMENSIONS	
DEPTH (ft)	DIAMETER (ft)
0-10	6
11-15	8
16-20	10
21-25	12

OR AS APPROVED BY IRCDUS ENGINEER.



LOCATION OF CONTROL PANEL TO BE APPROVED BY IRCDUS SEE S-18 TYPICAL PUMPING STATION (ELECTRICAL DETAILS)

SCHEDULE 80 PVC CABLE CONDUITS TO CONTROL PANEL (ENTIRE LENGTH) FOR POWER AND INSTRUMENTATION



ALL HARDWARE TO BE STAINLESS STEEL 304

PLAN VIEW

N.T.S.

SCHEMATIC: NOT INTENDED FOR CONSTRUCTION. SEE PROJECT DRAWINGS.

NOTES

1. CONTRACTOR TO CONTACT IRCDUS INSPECTOR PRIOR TO PUMP STATION CONSTRUCTION.
2. SEE NOTES AND PLAN VIEW DRAWING NO. S-16 AND S-17.
3. FOR DATA TABLE AND PUMP STATION GENERAL NOTES SEE DRAWING S-16.
4. FOR ELECTRICAL DETAILS SEE DRAWING S-18.
5. STRUCTURE DIMENSIONS MAY VARY UPON APPROVAL BY THE IRCDUS DUE TO BOYANCY COMPENSATION OR OTHER REQUIREMENTS.
6. GATE VALVE TO BE LOCATED AT FORCE MAIN JUNCTION.
7. STAINLESS STEEL LIFTING BAILS SHALL BE USED.
8. GRINDER PUMPS SHALL BE A MAXIMUM OF 5.0 HORSE POWER UNLESS OTHERWISE APPROVED BY IRCDUS.
9. ELECTRICAL CONTROL PANAL SHALL CONFORM TO PUMP MANUFACTURERS' & SCADA SYSTEM REQUIREMENTS.
10. SAFETY GRATE WITH STAINLESS STEEL HARDWARE SHALL COVER WETWELLS.
11. LINER FOR ALL WETWELLS SHALL BE HDPE OR FIBERGLASS.
12. FOR WETWELLS GREATER THAN 12' IN DAIMETER, TOTAL DEPTH CANNOT EXCEED 25'.
13. LIFT STATION SHALL BE LOCATED IN A DEDICATED EASEMENT 200' MINIMUM SETBACK FROM HOMES, CUL DE SAC & AWAY FROM SURFACE BODY WATER.

MARCH 2014

S-14
DRAWING
NO.

INDIAN RIVER COUNTY
DEPARTMENT OF
UTILITIES SERVICES



TYPICAL PUMPING STATION
(PLAN)