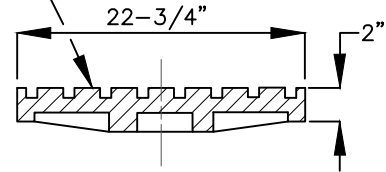
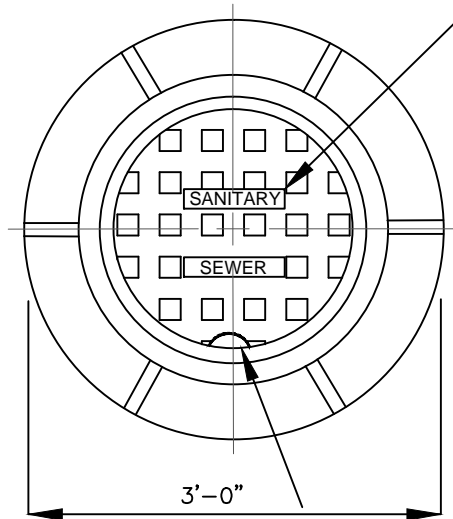
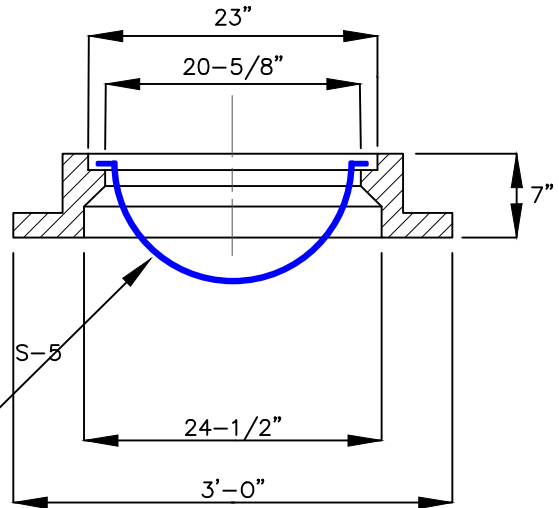


HEAVY DUTY CAST IRON
MANHOLE COVER – LETTERS TO
BE MARKED "SANITARY SEWER"



COVER – SECTION



FRAME – SECTION

NOTES

- NON-PENETRATING
1. WATER TIGHT SPECIFICATIONS ON DRAWING NO. S-5

PLAN VIEW

WATERTIGHT BOOT
RAIN GUARD
(AS REQUIRED)

-ART-

NOTES

1. A WATERTIGHT BOOT RAIN GUARD SHALL BE PROVIDED FOR ALL MANHOLE FRAME/COVERS AND APPROVED BY INDIAN RIVER COUNTY DEPARTMENT OF UTILITY SERVICES.
2. ALL MATERIALS ARE TO BE PER IRCUDS APPROVED MANUFACTURER'S PRODUCT LIST.
3. A U.S. FOUNDRY 420 RING AND "C" COVER IS SHOWN IN ABOVE DRAWING.

INDIAN RIVER COUNTY
DEPARTMENT OF
UTILITY SERVICES



STANDARD
MANHOLE CASTING

MARCH 2018

DRAWING
NO.
S-4